

Mitsubishi Chemical Aqua Solutions' DiaFellow™ FG provides a fitting solution for various water treatment sites.

Great for these uses:

- Industrial water processing, well water disinfection and clearing, drinking water processing for buildings, etc.
- Mineral water production, pre-processing for seawater desalination systems.
- Industrial water filtration, pre-processing for ultrapure water lines.
- Remove microparticles from pure and ultra-pure water.
- Pool water cleaning, red-earth-contaminated water processing.
- Standard filtration of river water, underground water, etc.
- Filtration for coagulative precipitation processing.

DiaFellow™ FG Standard Specifications

Model	FG01	FG02	FG03	FG04	FG07	FG12	FG19	FG31	FG37	FG55	
Performance (m ³ /hr)	~0.7~	~1.3~	~2.0~	~2.6~	~5.0~	~8.0~	~12.5~	~20.5~	~25.0~	~36.0~	
Vessel form	Single-module vessel type		Multi-module vessel type								
Connecting tube diameter	25A	40A	40A	50A	50A	65A	80A	80A	100A	125A	
Vessel diameter	250Φ	250Φ×2	450Φ	500Φ	600Φ	800Φ	1000Φ	1200Φ	1350Φ	1600Φ	
Installation area	L (mm)	1500	1700	2100	2200	2500	2500	2800	4000	5000	
	W (mm)	1000	1000	1500	1500	1800	2000	2200	2400	2900	
	H (mm)	1800	1800	2000	2000	2000	2200	2200	2400	2500	
Equipment power (kW)		1.15	1.35	1.55	2.30	3.00	4.45	7.40	11.40	11.40	16.70
	Compressor	0.75	0.20	0.40	0.40	0.75	1.50	2.20	3.70	3.70	5.50
	Blower	—	0.75	0.75	1.50	1.50	2.20	3.70	5.50	5.50	7.50
Chemical Cleaning pump	0.40	0.40	0.40	0.40	0.75	0.75	1.50	2.20	2.20	3.70	
System weight (kg)	250	300	400	500	850	1,500	2,000	3,050	3,300	4,300	
Chemical Cleaning tank capacity (L)	20	50	50	100	100	200	300	500	800	800	
Remarks	1. Performance varies depending on raw water quality. 2. The water supply pump is an option. 3. A pH adjuster, chlorine feeder, and other devices can be added as options.										



DiaFellow™ FG

Caution

- Read all warnings before using this system, and operate properly.
- Product specifications may be altered without notice for improvement or other purposes.

Distribution Source

MITSUBISHI CHEMICAL AQUA SOLUTIONS CO.,LTD.

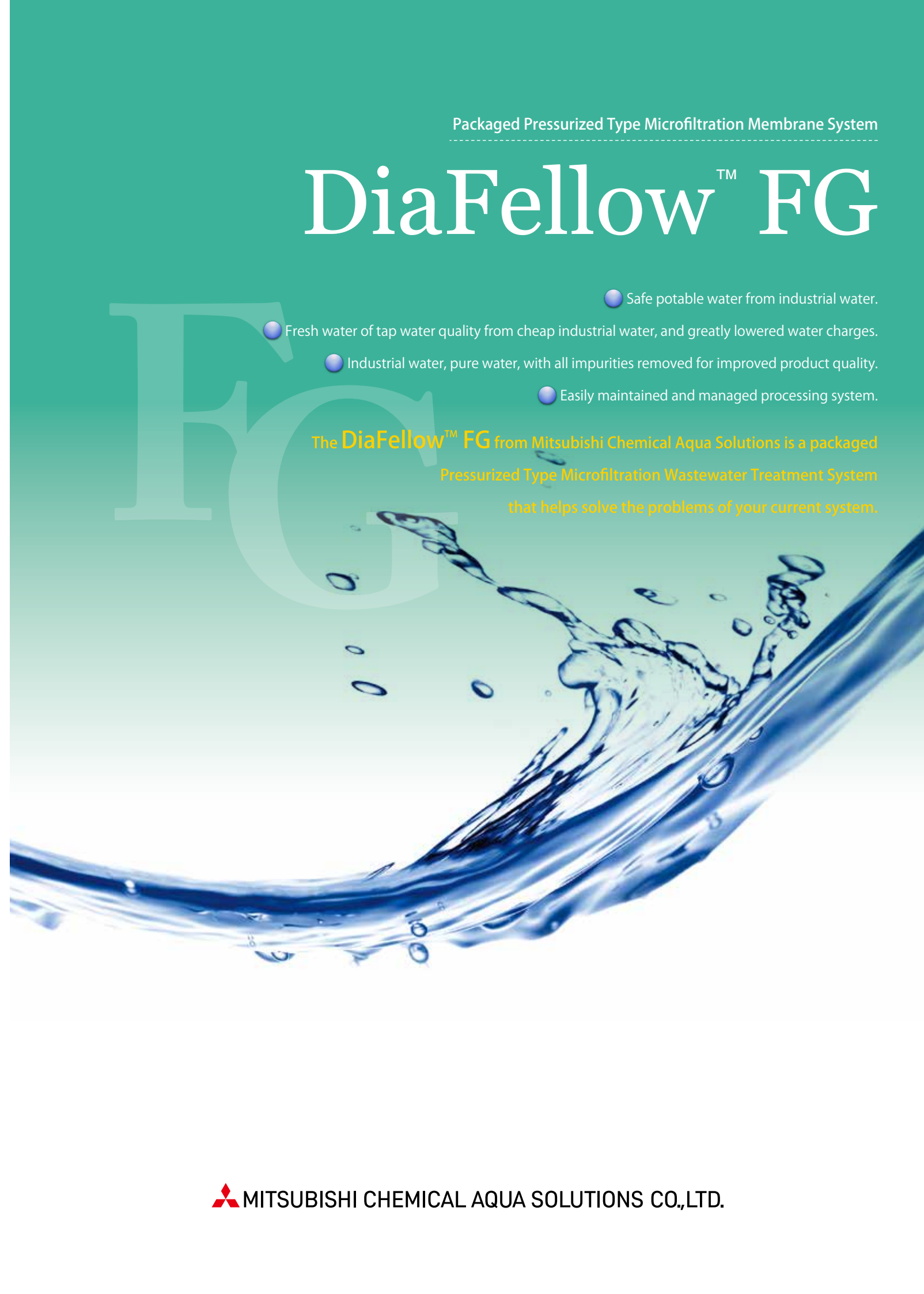
10F, Gate City Ohsaki East Tower, 1-11-2, Ohsaki, Shinagawa-ku,
 Tokyo 141-0032, Japan
 TEL : +81-3-6268-0369 FAX : +81-3-6268-0417

Packaged Pressurized Type Microfiltration Membrane System

DiaFellow™ FG

- Safe potable water from industrial water.
- Fresh water of tap water quality from cheap industrial water, and greatly lowered water charges.
- Industrial water, pure water, with all impurities removed for improved product quality.
- Easily maintained and managed processing system.

The DiaFellow™ FG from Mitsubishi Chemical Aqua Solutions is a packaged Pressurized Type Microfiltration Wastewater Treatment System that helps solve the problems of your current system.



DiaFellow™ FG

Advanced filtration technology using hollow fiber microfiltration membrane can dramatically improve water-related cost performance.

System features

1. Safe water

By filtering it through the same sort of membrane as used in household water filters, you can get extremely safe water.

2. Reduced water charges

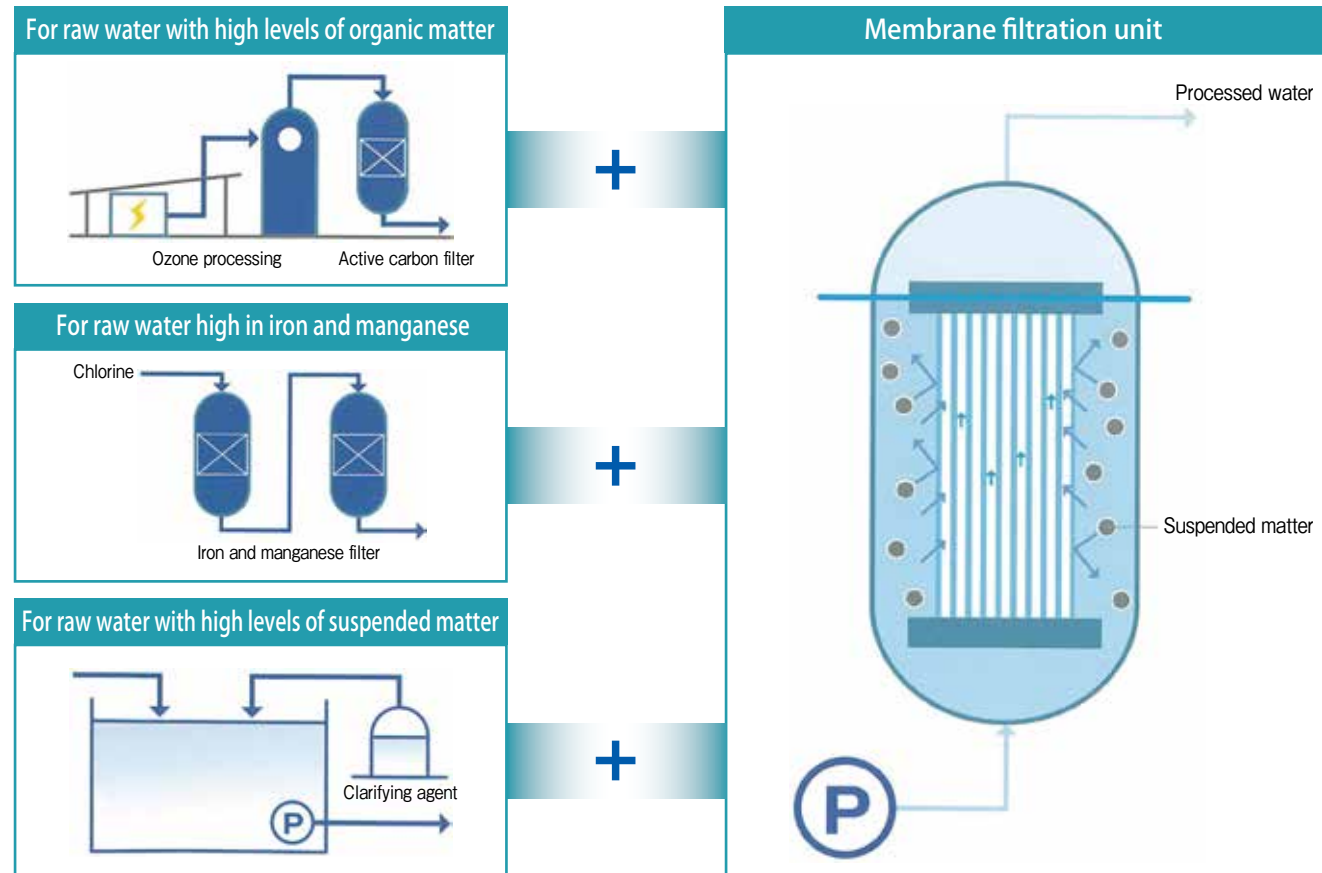
Produce water with the same high quality level as tap water by filtering cheap industrial or ground water through membranes. Slash your water charges.

3. Reuses membranes for longer component life

Component life is extended by reverse air cleaning to prevent—and regular chemical cleaning to remove—membrane blockage.



Process flow sheet

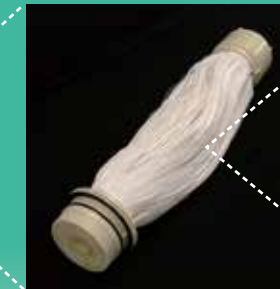


The hollow fiber microfiltration membrane made by Mitsubishi Chemical

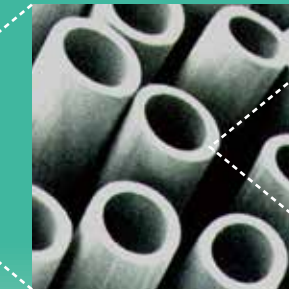
Sterapore™ G



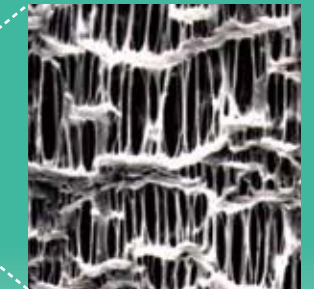
FG31 multi-module vessel inner membrane module



Membrane module



External view of hollow fiber membrane (x40)



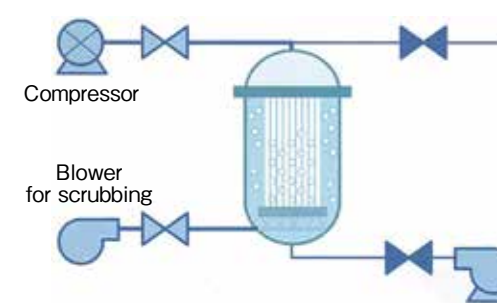
External view of hollow fiber membrane (x8000)

Module specifications

Model		UMF824WI	UMF2024WFA	UMF2012WFA
Membrane properties	Materials	Polyethylene porous hollow fiber microfiltration membrane (hydrophilic)		
	Pore size	0.1 μm		0.03 μm
Effective membrane area		8m ²	20m ²	
Construction materials	Housing materials	PVC	ABS	
	Water collection pipe			
	Cap			
	Seal materials			
Dimensions		φ110×830mm	φ170×808mm	
Performance	Filter flow volume	0.4m ³ /h	1.0m ³ /h	0.6m ³ /h
	Maximum operational differential pressure	≤196kPa (≤2kg/cm ²)		
	Standard operating temperature	≤45°C		
Packaging		Packaged in paper tubes / film pack with 0.2% sodium benzoate		

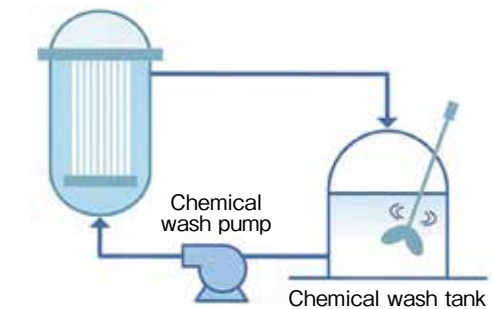
Reverse cleaning

The membrane is air-cleaned about every half hour.



Chemical washing

Any materials clogging the membrane are regularly flushed out chemically.



Installation examples



800m³ / day
Industrial-to-drinking water installation (Meat processing plant)



190m³ / day
Industrial-to-drinking water installation (Rice-cooking plant)