

Mitsubishi Chemical to Expand Sales of MOSMITE™ Antireflective Film for Picture Frames

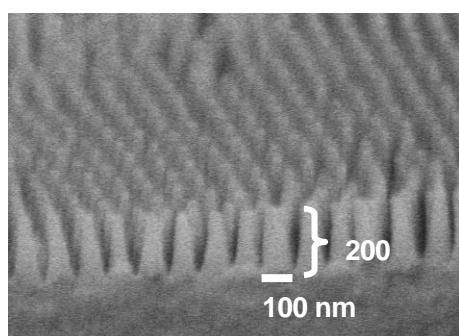
Mitsubishi Chemical Corporation

Mitsubishi Chemical Corporation (MCC; Head office: Chiyoda-ku, Tokyo; President: Masayuki Waga) announced today that it looks to expand sales of its MOSMITE™ antireflective film for picture frames. Tohkoh Jushi Co., Ltd., which handles this brand and ACRYLITE™ (marketed outside Japan as SHINKOLITE™) acrylic sheet, another MCC offering, has started selling an acrylic sheet with MOSMITE antireflective film bonded on both sides for picture frames.

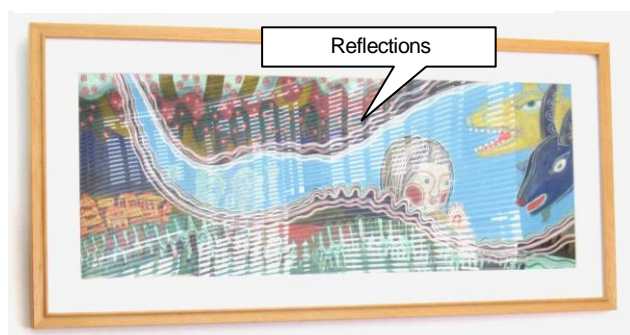
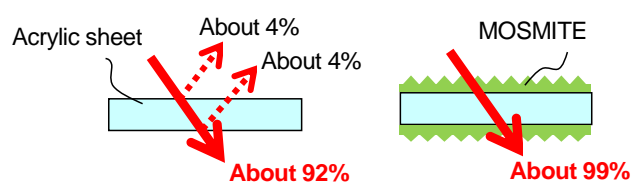
MOSMITE mimics the fine structure of moth eyes. The width of the 200-nanometer surface protrusions with their 100-nanometer intervals is narrower than the wavelength of visible light. This diminishes the resulting change in the refractive index of light and suppresses reflections. The reflectivity of glass and plastic surfaces is generally 4 to 5%. Applying MOSMITE slashes reflectivity to between 0.1 and 0.3%, for outstanding light transmission that enhances the appreciation of framed pictures by eliminating glare.

MCC has sponsored exhibitions at the Sato Museum of Art over the years, supplying MOSMITE-bonded acrylic sheets for three such events. These were the I Am a Cat Exhibition in November 2017, the Picture Book Depictions of Japanese Paintings Exhibition in January 2019, and the Victory Bouquet Exhibition in January 2020. MCC has garnered high regard from painters, picture dealers, and curators for such efforts, which encouraged the Company to cultivate its business in the art realm by collaborating with Tohkoh Jushi.

MCC will continue to develop applications and markets for MOSMITE in Japan and around the globe.



Enlarged structure of MOSMITE



Without MOSMITE



With MOSMITE

Original picture by Isamu Akino
Source: *Punku Maincha* published by Fukuinkan Shoten Publishers, Inc.
© 1968 Kazuko Akino

For further information, please contact:
Public Relations and Investor Relations Office
Mitsubishi Chemical Holdings Corporation
Tel: [+81] (0)3-6748-7140