

Sustainability

# Implementing Sustainability

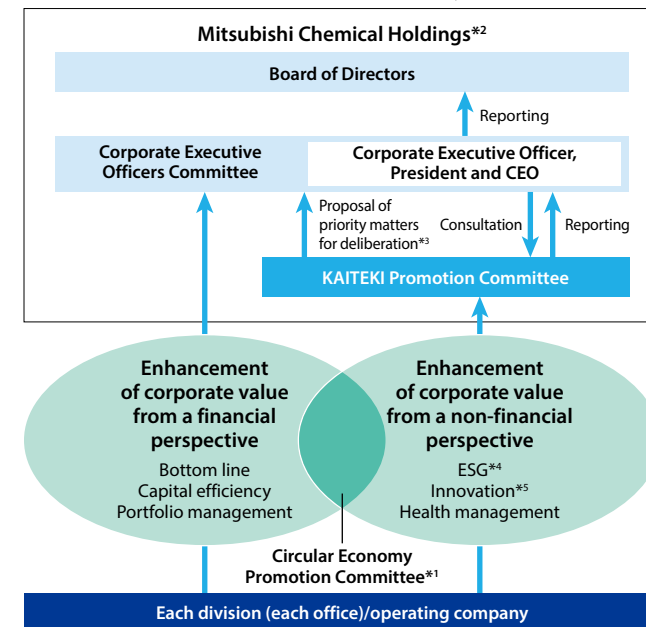
The Mitsubishi Chemical Group recognizes sustainability as an important management theme and is addressing the material issues identified in the formulation of the medium-term management plan by working to fulfill the targets set in connection with the issues.

Under the new management policy, "Forging the future," the Group will target sustainable growth by further strengthening the business foundation, working to improve environmental and social sustainability, including in the area of carbon neutrality, and nurturing businesses that support the portfolio strategy.

## Structure for implementing sustainability

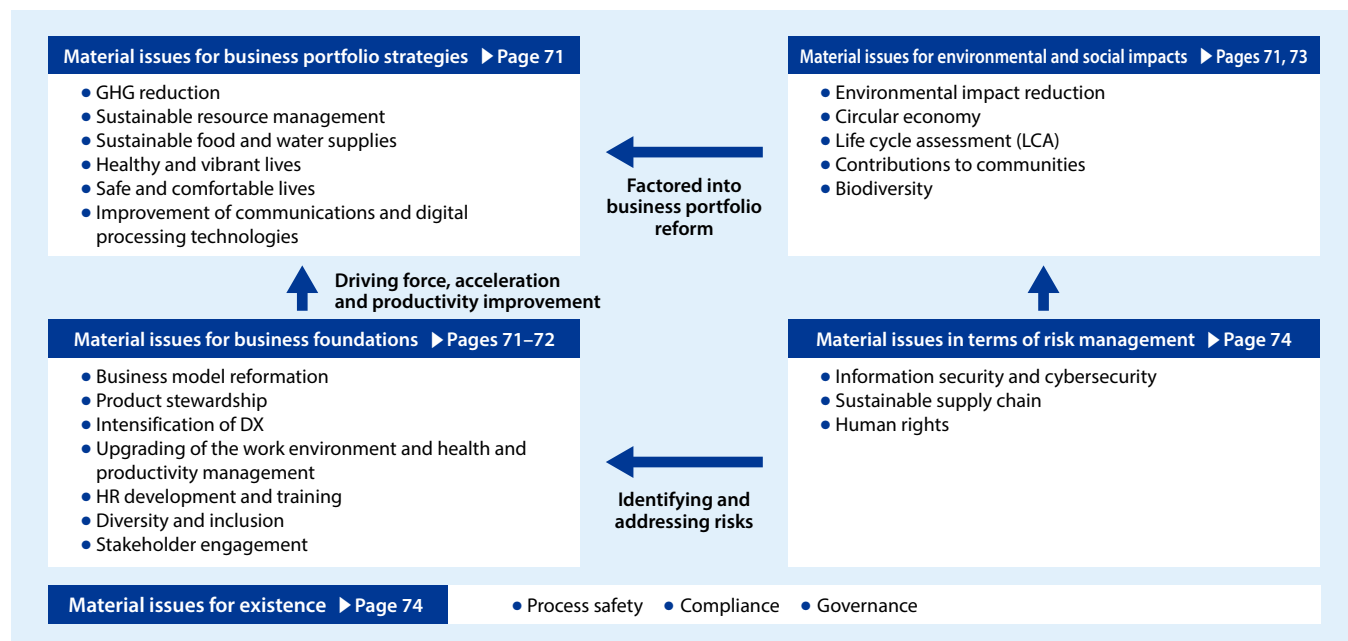
The MCG Group is taking measures to increase long-term corporate value and has established the KAITEKI Promotion Committee to coordinate the increase in corporate value from a non-financial perspective. Meanwhile, as a crossover between social and economic value, the Circular Economy Promotion Committee\*1 has implemented Group-wide measures to advance the circular economy. Going forward, MCG will continue to steadily implement sustainability initiatives based on a structure aligned with the new management policy.

## Structure for implementing sustainability in fiscal 2021



\*1 Changed in 2022 to Green Transformation Promotion Committee  
 \*2 Currently Mitsubishi Chemical Group Corporation  
 \*3 Where necessary  
 \*4 Governance issues are mainly addressed by committees such as the Nominating Committee.  
 \*5 Determination of the direction of technologies, etc.

## Overview of material issues [Identification process of material issues and related activities](#)



➡ For the material issues identified, a strategic response is formulated and indices (MOS Indices) and targets are set to measure progress (▶ Pages 71–74).

## Discussions by the KAITEKI Promotion Committee

July 2021	<ul style="list-style-type: none"> <li>• Progress of MOS activities</li> <li>• Exploring the path to carbon neutrality</li> <li>• Activities for KAITEKI Health and Productivity Management</li> <li>• Progress of MOT activities</li> </ul>
February 2022	<ul style="list-style-type: none"> <li>• Sustainability-related information disclosure</li> <li>• Activities related to MOS and human resources and work styles</li> </ul>