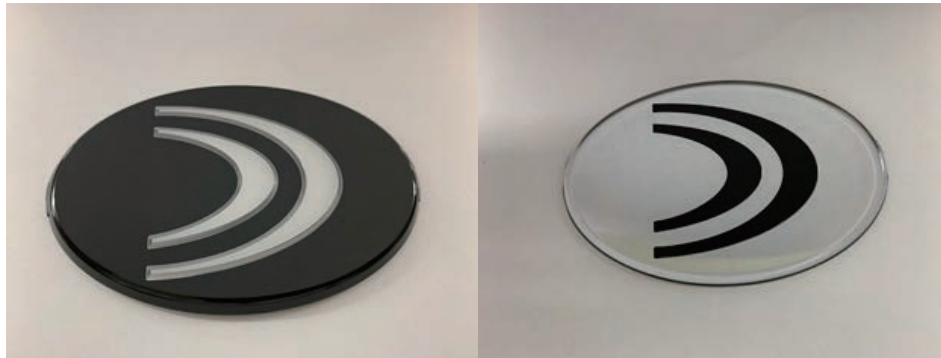


- ① Metallic appearance of molded parts with mirror paint
- ② Large size cover lens by injection molding with IML process

### Characteristics and Advantages

#### ① Metallic appearance of molded parts with mirror paint

- Achieves a metallic appearance with light transparency
- Greater design flexibility by expansion of color range
- This method also makes Millimeter wave transmission possible with lower price in comparison to indium deposition method.



#### ② "Twin monitor" cover lens

- Large size & 3D cover lens having AR/AG/HC/AF properties
- Better retardation by compression molding



### Applicable components

- Display devices
- Sensors

### Proposal for the future

- Available for metallic parts of high appearance-quality regardless of the need for millimeter wave transmission
- Available for design freedom of CID shape